

DUAL SPEED FLOOR MACHINES

50 Ft. Heavy Duty Cord with Durable spring steel strain relief

Dual metal switch levers, left or right hand operation

5 YEAR WARRANTY

Tough All steel and stainless steel construction

92 lbs - Optimum weight delivers more resistance against the floor to get the job done better and faster

Extremely durable & convenient handle adjustment mechanism is foot operated.

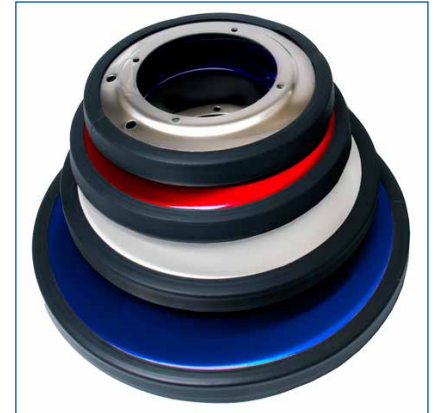
Black Powder Coated or Polished, Chrome Plated Motor Cover

1.5HP 66 Frame Motor with Triple Planetary Gears

5" non-marking wheels

Non-marking PVC bumper prevents marking furniture or walls

17" & 20" heads available, interchangeable, color options available



Dual Capacitors



Optional 4 gallon shampoo tank



PAD Driver

Optional Brushes - See Table on Reverse for Part #s



SATURN

DUAL SPEED FLOOR MACHINES

Specifications:

Part #: 17DS3-SS* or 17DS3-BK**	Part #: 20DS3-SS* or 20DS3-BK
17" Head	20" Head
180/320 RPM	180/320 RPM
1.5 HP Motor	1.5 HP Motor
Stainless Steel or Black Powder Coated Brush Cover	Stainless Steel or Black Powder Coated Brush Cover
86 lbs.	92 lbs.
Anti-fatigue Handle Grips	Anti-fatigue Handle Grips
50' Power Cord	50' Power Cord
14.4 Amps	14.4 Amps
Gear box "Steel Triple Planetary"	Gear box "Steel Triple Planetary"
Shipping Weight 106 lbs.	Shipping Weight 112 lbs.
Shipping Dimensions: 48"H x 26.5"L x 23"W	Shipping Dimensions: 48"H x 26.5"L x 23"W
5 Year Warranty	5 Year Warranty

* SS notes stainless steel brush cover ** BK notes black powder coated brush cover



Detachable power cord at the motor for easy service and maintenance



Optional Pad Drivers and Brushes:

Model#	Description – 17" Floor Machines
1601BR	16" Pad Driver with Molded-In Clutch Plate, For 17" Machine
1603BR	16" Pad Driver, For 17" Machine
1505BR	Nylon Carpet Brush, 15" Block, For 17" Machine
1506BR	Poly Carpet Brush, 15" Block, For 17" Machine
1507BR	Grit Brush, 15" Block, For 17" Machine, 46 Grit
1507BR-1	Grit Brush, 15" Block, For 17" Machine, 80 Grit
1507BR-2	Grit Brush, 15" Block, For 17" Machine, 180 Grit
1507BR-3	Grit Brush, 15" Block, For 17" Machine, 500 Grit
Model#	Description – 20" Floor Machines
1901BR	19" Pad Driver with Molded-In Clutch Plate, For 20" Machine
1903BR	19" Pad Driver, For 20" Machine
1805BR	Nylon Carpet Brush, 18" Block, For 20" Machine
1806BR	Poly Carpet Brush, 18" Block, For 20" Machine
1807BR	Grit Brush, 18" Block, For 20" Machine, 46 Grit
1807BR-1	Grit Brush, 18" Block, For 20" Machine, 80 Grit
1807BR-2	Grit Brush, 18" Block, For 20" Machine, 180 Grit
1807BR-3	Grit Brush, 18" Block, For 20" Machine, 500 Grit

Questions? Contact Us: 800.338.3342 • edic-usa.com

