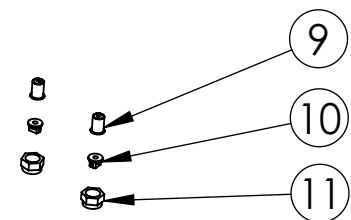
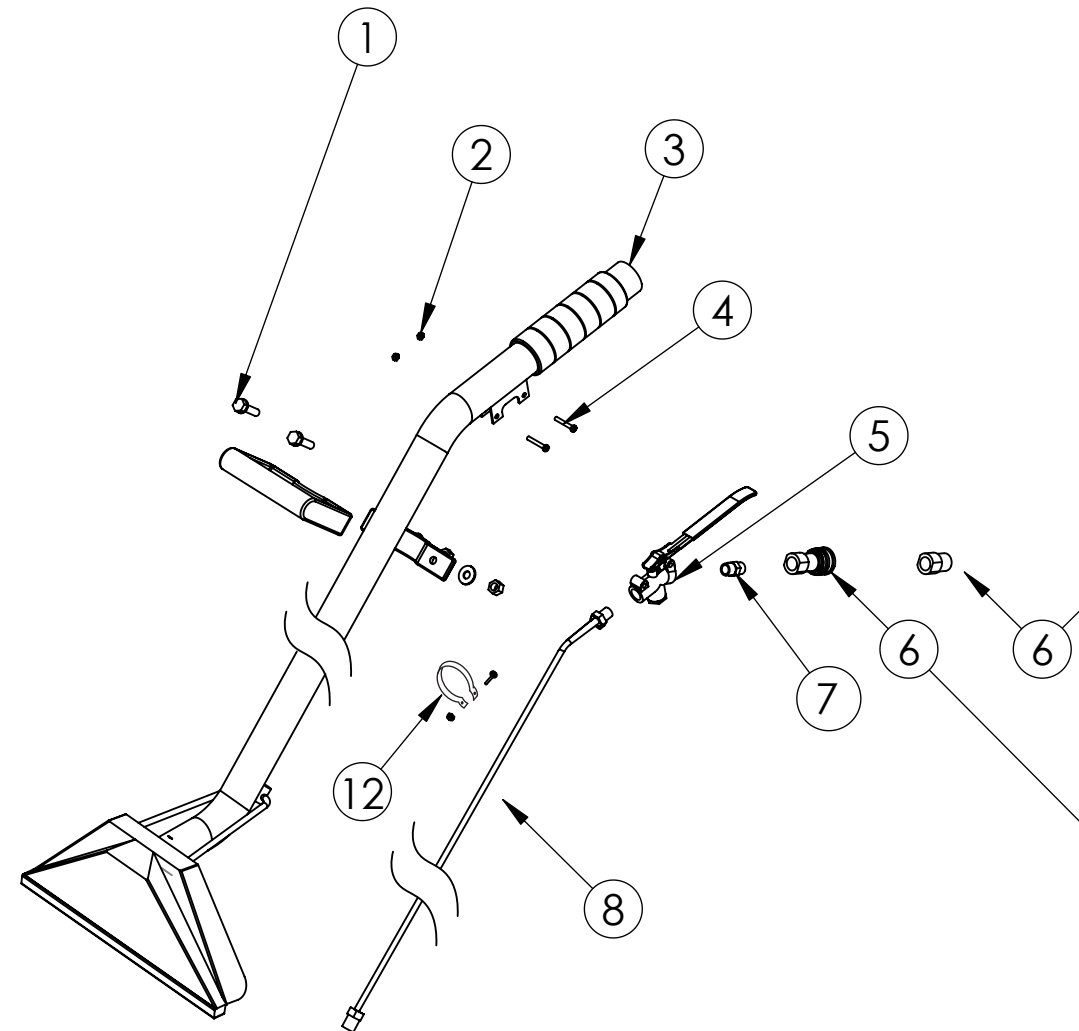


1034 CARPET WAND 2-15-17



1034 CARPET WAND 2-15-17

ITEM NO.	1034-11003MB	1034-110015MB	1034-11001MS	QTY.
1	D13721 Hand Grip Assembly			1
2	C00278 Locknut, 10-32, Nylon, SS			2
3	1034M-8 Wand, Stainless Steel			1
4	C11491 Screw, 10-32 X 1 in,Truss Hd., Stainless, Phillips			2
5	G00526-1 Spray Valve Assembly			1
6	A00104 QD, 1-4M X 1-4FP			1
7	A12960 .25 X .25 Brass Hex Nipple			1
8	13707A SS Solution tube assembly			1
9	A00094B Check Valve with Strainer			2
10	A00094A-11 Spray Tip Only, 11003	A00094A-9 Spray Tip Only, 110015	A11867 Spray Tip Only,11001, SS	2
11	A00094D Check Valve Cap			2
12	D13791 Solution tube bracket with hardware			1

ITEM NO.	1034-11003FB	1034-110015FB	1034-11001FS	QTY.
1	D13721 Hand Grip Assembly			1
2	C00278 Locknut, 10-32, Nylon, SS			2
3	1034M-8 Wand, Stainless Steel			1
4	C11491 Screw, 10-32 X 1 in,Truss Hd., Stainless, Phillips			2
5	G00526-1 Spray Valve Assembly			1
6	A00102 QD, 1-4F X 1-4FP			1
7	A12960 .25 X .25 Brass Hex Nipple			1
8	13707A SS Solution hose assembly			1
9	A00094B Check Valve with Strainer			2
10	A00094A-11 Spray Tip Only, 11003	A00094A-9 Spray Tip Only, 110015	A11867 Spray Tip Only,11001, SS	2
11	A00094D Check Valve Cap			2
12	D13791 Solution tube bracket with hardware			1